



## 2 Kraft Court Pakenham VIC

5 🏠 2 🚿 3 🚗

This Cosy Family Home is nestled in the most sought-after pocket of Pakenham on approx 792m<sup>2</sup> parcel of land. This property is the ideal stepping stone for first home buyers, upsizers, or astute investors or developers and it is ready for you to move straight into.

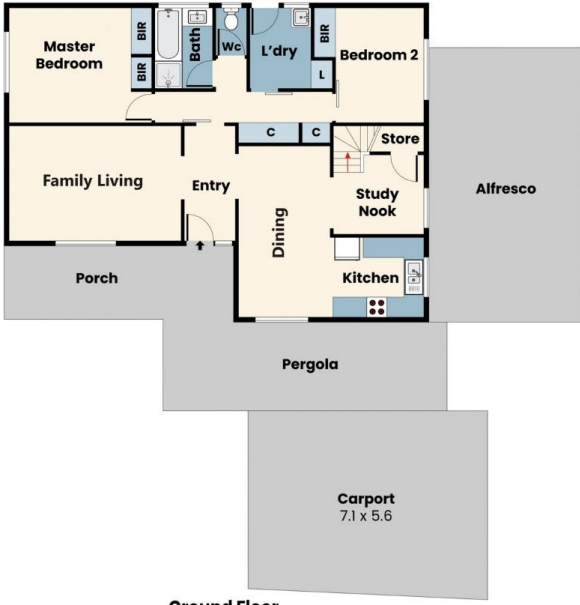
**Price** : New Price: \$680,000 - \$740,000  
**Land Size** : 792 sqm  
**View** : <https://www.yere.com.au/sale/vic/south-east/pakenham/residential/house/8014092>

Property features include:

- ? Development opportunity and subdivision potential S.T.C.A, approx 792m<sup>2</sup> land
- ? Five generously sized bedrooms, fitted with built-in robes
- ? Study nook
- ? Floating flooring downstairs and brand new carpet upstairs including stairs
- ? Spacious kitchen features quality appliances, including a Gas cooktop, Oven, rangehood, and ample pantry & cupboard space for storage
- ? Spacious Family living, dining/meals area and 2nd family



**Rick Kothari**  
03 8578 5700



Ground Floor



Top Floor



Site Plan

Floor Plan

The floor plan is not to scale. Areas and dimensions are approximate and therefore plan should only be used for illustrative purposes

Detailed description: A professional real estate agent profile for Rick Kothari. On the left, a circular portrait shows him in a dark suit, white shirt, and blue tie. To the right, his name 'RICK KOTHARI' is displayed in large blue letters, followed by his phone number '0412 767 574' and email 'rick@yere.com.au'. Below this is the 'YE YOUR EXPERT' logo. At the bottom, a 'Trusted Agent' badge features three stars and the text 'YOUR LOCAL AND TRUSTED REAL ESTATE EXPERT'. The background is a mix of dark blue and yellow.