



## 7 Edrington Park Drive Berwick VIC

5 🏠 3 🚗 2 🚗

Step into a world of refined living at 7 Edrington Park Drive, where timeless elegance meets modern sophistication. Nestled in the heart of Berwick, this exquisite residence invites you to experience a lifestyle of unparalleled luxury and comfort.

As you approach the property, you're greeted by beautifully landscaped gardens that set the tone for the grandeur within. Sitting on a generously sized block of land, this home offers both space and privacy, making it a rare gem in a coveted location. The formal lounge flows into multiple living areas perfect for relaxation and entertaining.

The gourmet kitchen features high-quality appliances, ample storage and a breakfast bar, while the adjacent

**Type** : House  
**Price** : 1,200,000 - 1,300,000  
**Land Size** : 1161 sqm  
**View** : <https://www.yere.com.au/sale/vic/south-east/berwick/residential/house/8262795>

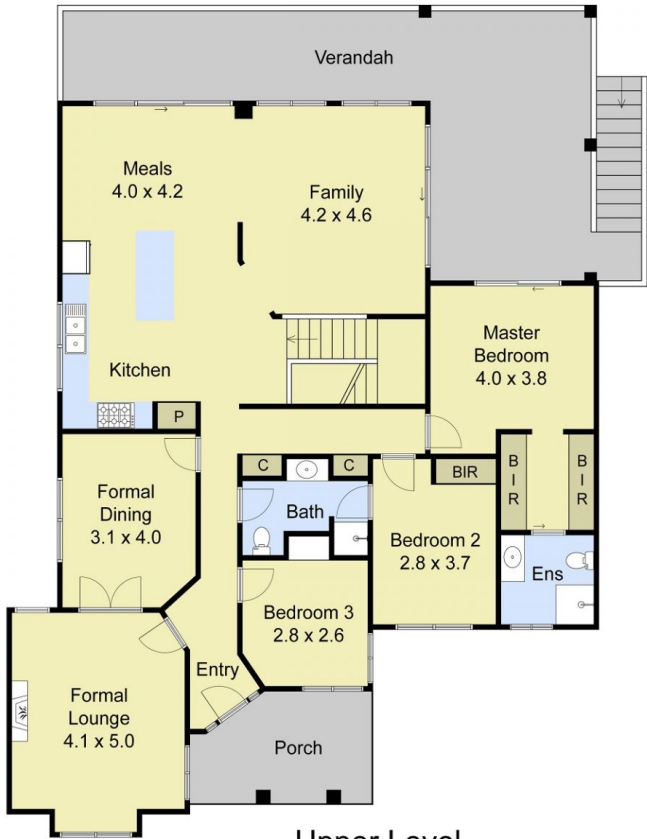


**Simon Chang**  
03 8578 5700

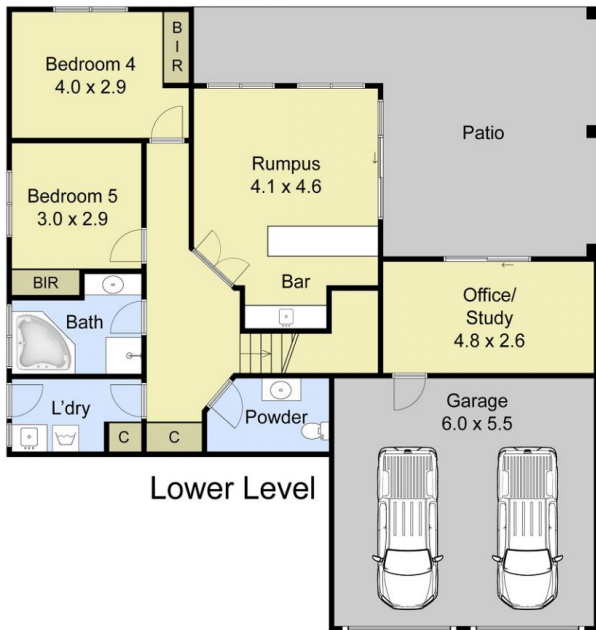


**Vandana Dewan**  
03 8578 5700

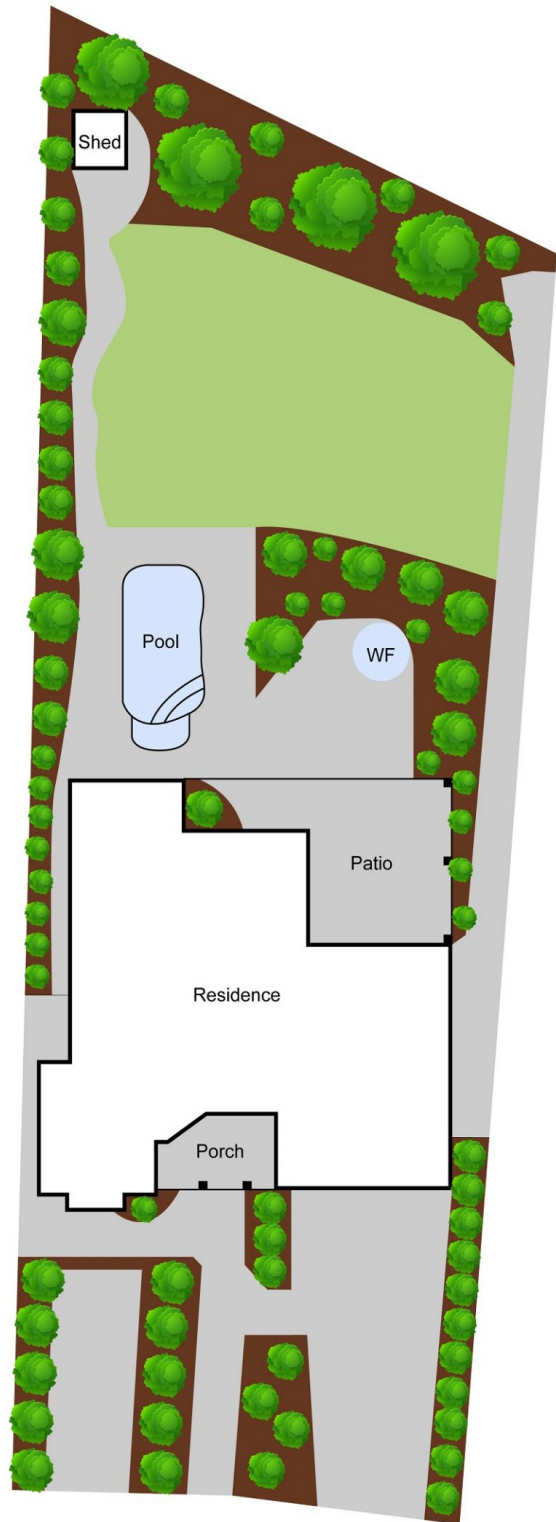
[For full version visit the website](https://www.yere.com.au)



Upper Level



Lower Level



0m 1m 2m 3m 4m 5m



N

Scale in metres. Indicative only. Dimensions are approximate. All information contained herein is gathered from sources we believe to be reliable. However, we cannot guarantee its accuracy and interested parties should rely on their own enquiries.

Residence	-228m <sup>2</sup>
Garage	-33m <sup>2</sup>
<b>Total</b>	<b>-183m<sup>2</sup></b>

## 7 Edrington Park Drive, Berwick