



27 Timberline Parkway Pakenham VIC

4  2  2 

Welcome to your next chapter at 27 Timberline Parkway, nestled in the thriving and family-friendly community of Pakenham. Designed with growing families in mind, this beautifully presented home blends comfort, practicality, and modern elegance-ready for you to move in and enjoy from day one.

From the moment you step inside, you'll feel the warmth of a home built for making memories. Boasting 4 generous bedrooms, 2 stylish bathrooms, and a double lock-up garage with internal and remote access, this residence offers the perfect balance of space and functionality.

The master suite is your private retreat, complete with a walk-in robe and a luxurious ensuite featuring a double

Type : House

Price : \$680,000 - \$720,000

View : <https://www.yere.com.au/sale/vic/south-east/pakenham/residential/house/8684993>

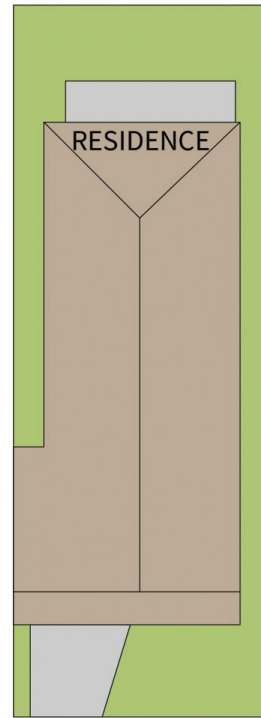


Rachhpal Singh
0430081021

[For full version visit the website](https://www.yere.com.au)



Floor Plan



Site Plan

The floor plan is not to scale. Areas and dimensions are approximate and therefore plan should only be used for illustrative purposes