



18 Domain Drive Drive Berwick VIC

4 2 2

A fantastic 4-bedroom, family home set in a peaceful pocket of Berwick, combining comfort, generous living spaces, and effortless entertaining. Perfectly positioned close to Nossal High School, the University, and Berwick Fields PS and Kambrya College school zone, as well as easy access to the M1 freeway. Minutes from various local facilities and amenities, including Eden Rise Shopping Centre, Medical Centre, and metro train station.

This home offers plenty of comfort, convenience, and location-

- Master Bedroom with Walk-in-Robe and full ensuite bath.
- Remaining bedrooms with built-in robes and serviced with a Central bath and powder room.
- Multiple living zones include formal living, family, and meals area

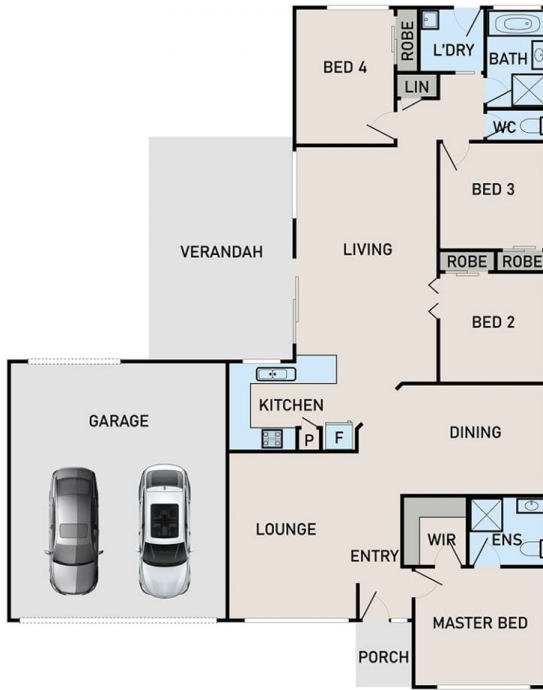
[For full version visit the website](https://www.yere.com.au)

Type : House
Price : \$830,000-\$890,000
Land Size : 531 sqm
View : <https://www.yere.com.au/sale/vic/south-east/berwick/residential/house/8688532>

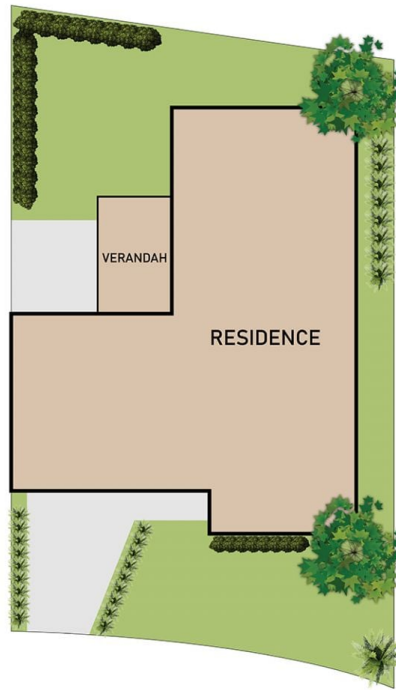


Vandana Dewan
03 8578 5700

FLOOR PLAN



SITE PLAN



18 DOMAIN DRIVE, BERWICK

FLOOR AND SITE PLAN IS FOR ILLUSTRATIVE PURPOSES ONLY AND NOT TO SCALE. THE VENDOR, AGENCY OR SUPPLIER MAKE NO GUARANTEE, WARRANTY OR REPRESENTATION AS TO THE ACCURACY OF ANY INFORMATION CONTAINED HEREIN AND THE COMPLETENESS OF THE FLOOR PLANNED WILL ACCEPT NO LIABILITY FOR ITS ACCURACY. INTERESTED PARTIES ARE ADVISED TO MAKE THEIR OWN INDEPENDENT ENQUIRIES.



Produced by **LUXORA SHOOTS**