



26 Murchison Link Pakenham VIC

3 2 2

Positioned in the highly sought-after Lakeside Pakenham Estate, this beautifully presented home at 26 Murchison Link offers the perfect blend of comfort, space, and lifestyle for growing families.

From the moment you arrive, the elevated block and low-maintenance landscaped gardens with artificial grass set the tone for easy living. Step inside and be greeted by high ceilings and a light-filled, spacious layout designed with family life in mind.

The home features three generously sized bedrooms, including a private master retreat complete with a walk-in robe and ensuite. The remaining two bedrooms include built-in robes and are serviced by a central bathroom with a

[For full version visit the website](https://www.yere.com.au)

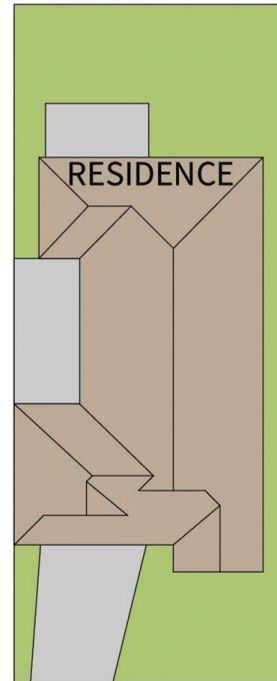
Type : House
Price : \$680,000 - \$740,000
Land Size : 400 sqm
View : <https://www.yere.com.au/sale/vic/south-east/pakenham/residential/house/8691958>



Rachhpal Singh
0430081021



Floor Plan



Site Plan

The floor plan is not to scale. Areas and dimensions are approximate and therefore plan should only be used for illustrative purposes