



## 11 Greenwich Drive Berwick VIC

4 2 2

Welcome to a residence where luxury, comfort and family living unite in perfect harmony - an exceptional opportunity in the highly sought-after Minta Farm Estate, Berwick.

Proudly positioned on an elevated block in one of Berwick's most prestigious family communities, this beautifully presented home delivers an unforgettable lifestyle with premium finishes, multiple living zones and seamless indoor-outdoor entertaining designed for modern families who appreciate quality and sophistication.

From the moment you arrive, the exposed aggregate driveway, timber-decked front porch and manicured gardens create an elegant first impression. Step inside and be greeted by soaring high ceilings, warm timber flooring

[For full version visit the website](https://www.yere.com.au)

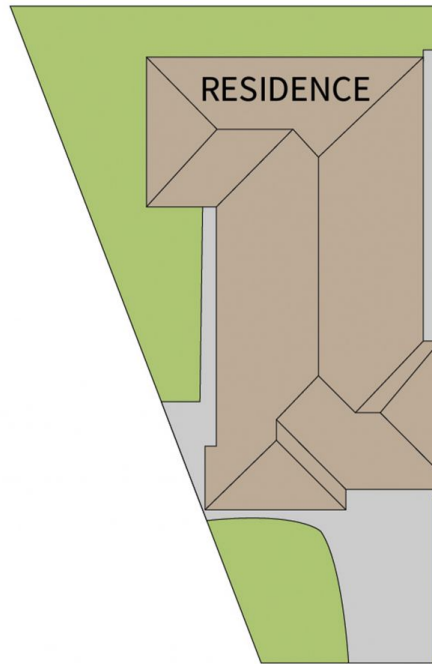
**Type** : House  
**Price** : \$900,000 - \$990,000  
**Land Size** : 496 sqm  
**View** : <https://www.yere.com.au/sale/vic/south-east/berwick/residential/house/8698673>



**Rachhpal Singh**  
0430081021



**Floor Plan**



**Site Plan**

The floor plan is not to scale. Areas and dimensions are approximate and therefore plan should only be used for illustrative purposes